



Superior  
Quality



Genuine  
Parts



Assured  
Service

**ACCURUB**  
Drive Beyond Miles

**SAFE STEER FOR THE LONG HAUL !**

# Accurub King Pin Repair Kit

Accurub King Pin Repair Kits endeavors safety with optimized coefficient of friction to promote sustained flow of lubrication and henceforth extending its durability. Every product range is precisely designed with higher collision resistance and manufactured for user friendly fitment for end use confirming to global standards and expectations.

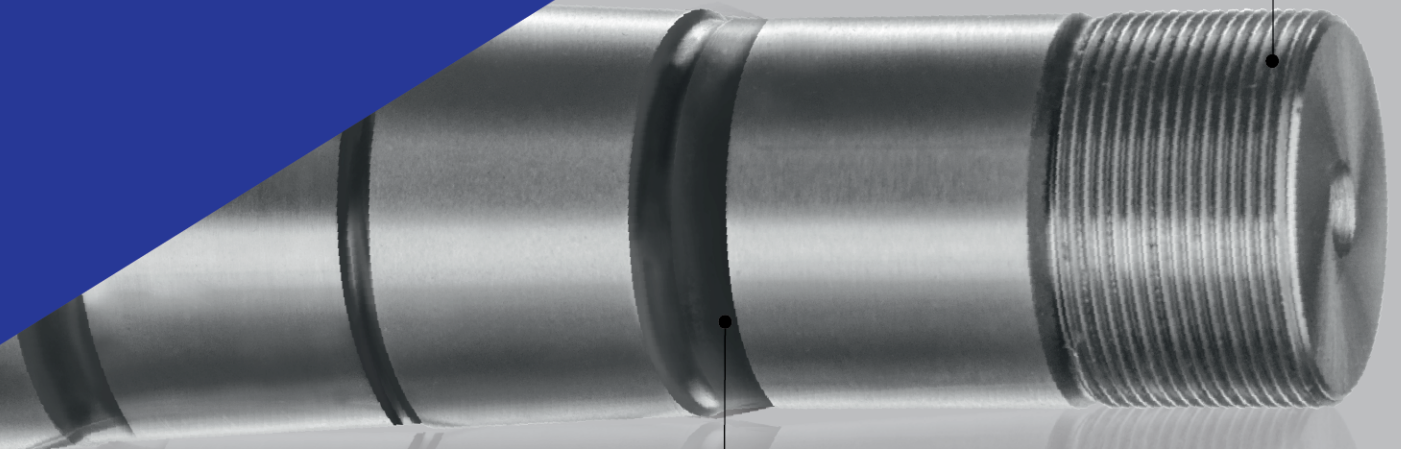
Accurub's integrated manufacturing facility is backed by ultra modern testing and validation capabilities. This assures that each designed King Pin always meets the industry's highest standards and customer expectations at all times.

## Precise Machining

CNC machined thread  
for easy-to-fit application

## High-Tech Surface Treatment

- Heat treatment guarantees proper surface hardness and ensures an ability to withstand the wear and tear of friction and extended durability



# Accurub King Pin Repair Kit

- Induction hardening with consistent process control

## Advanced-Grade Material

- Selected material for high-strength and durability
- Chrome plated metal alloy for corrosion resistance

- Induction hardened with top notch process control
- As per global accepted tolerances

## High-Quality Bearing

- Bearings qualifies all desired requirements confirming suitable coefficient of frictions
- Bearing ensures stability & frictionless rotation

## Efficient Sealing

Seals polymer developed at Accurub R&D ensures no premature failure, no tearing, no distortion and promotes optimized seal protection against harsh environmental conditions during its service life

